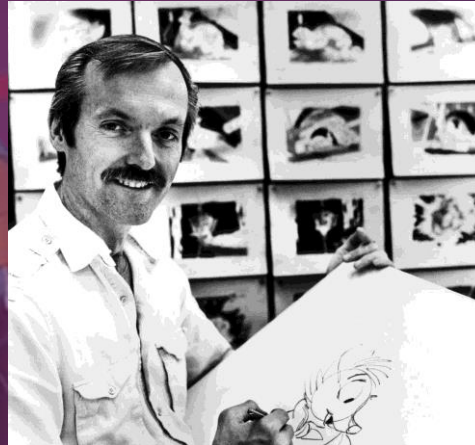
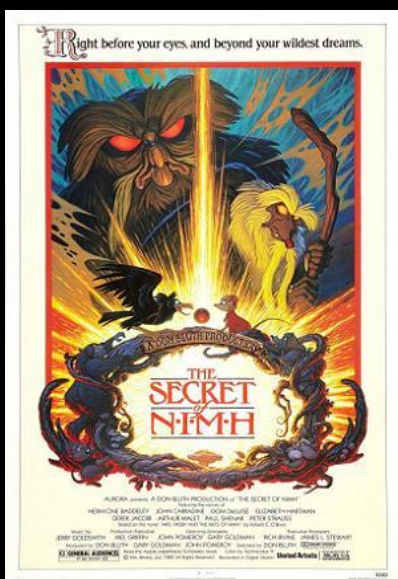


Don Bluth

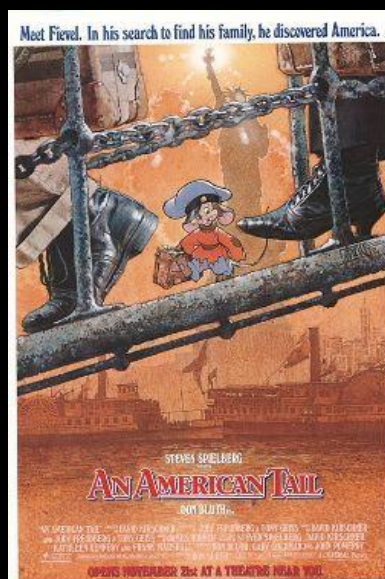
ANIMATOR. FILM DIRECTOR. PRODUCER.



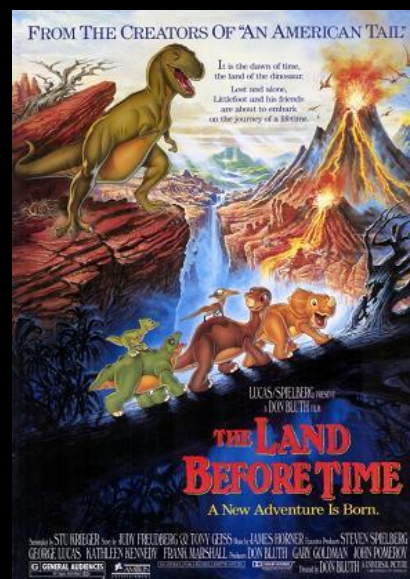
Producer/director Don Bluth is one of the most prestigious animators in the industry, admired by peers all over the world for his creative talent, as well as his versatility in bringing memorable characters to life. He part takes in many roles while working on his films. He designs all the characters, serves as key storyboard artist, and when the mood strikes him, he has also been known to write some clever songs to accompany his lively and amusing characters. As if these duties don't keep him busy enough, he also writes and/or collaborates on most of the scripts for his projects.



The Secret of
NIMH
(1982)



An American
Tail
(1986)



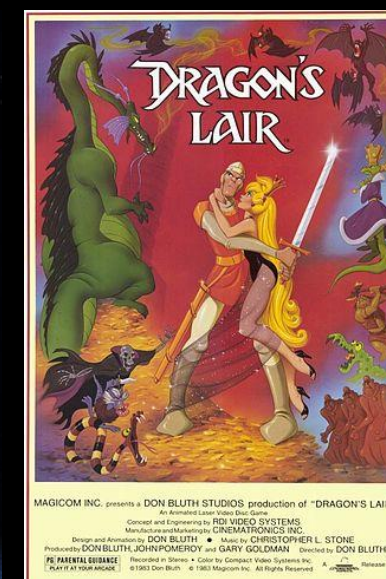
The Land Before
Time
(1988)



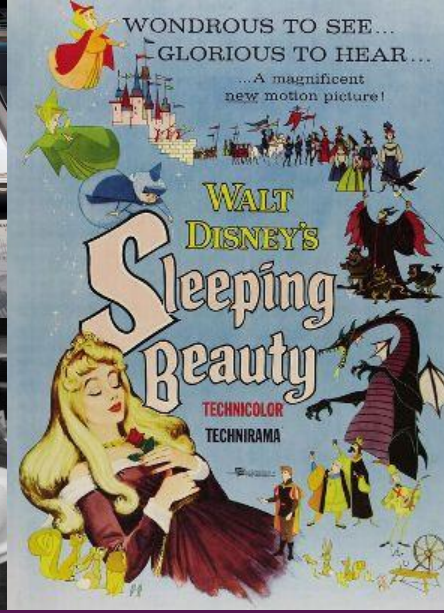
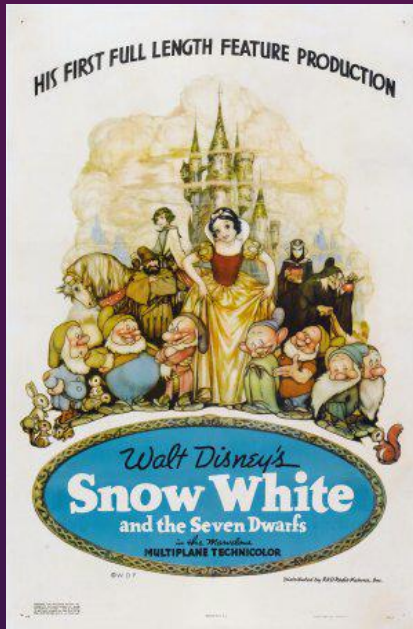
All Dogs Go to
Heaven
(1989)



Anastasia
(1997)



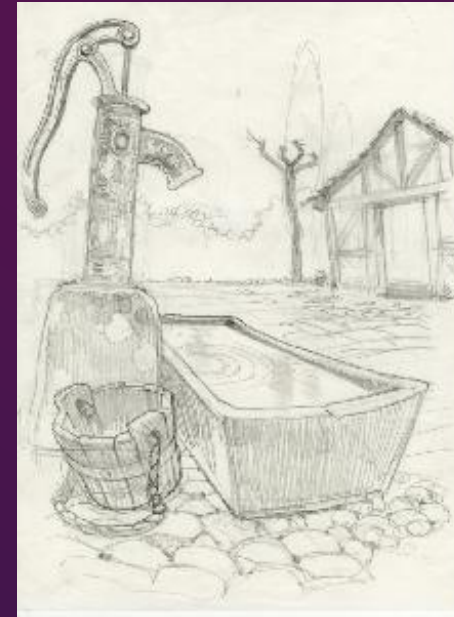
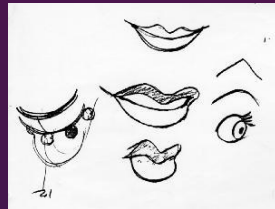
Dragons Lair
(1983)

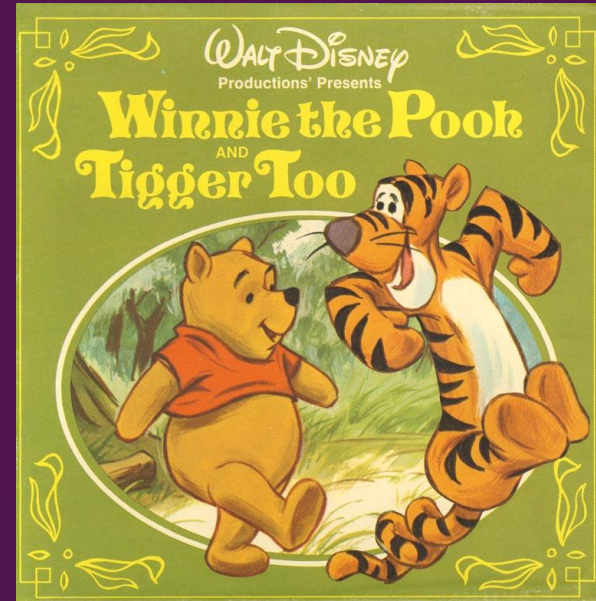
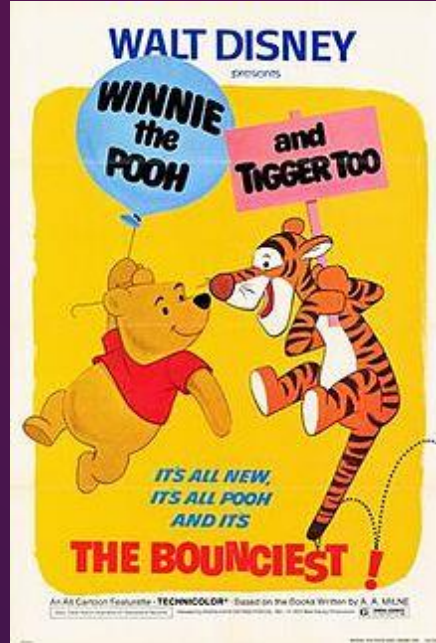
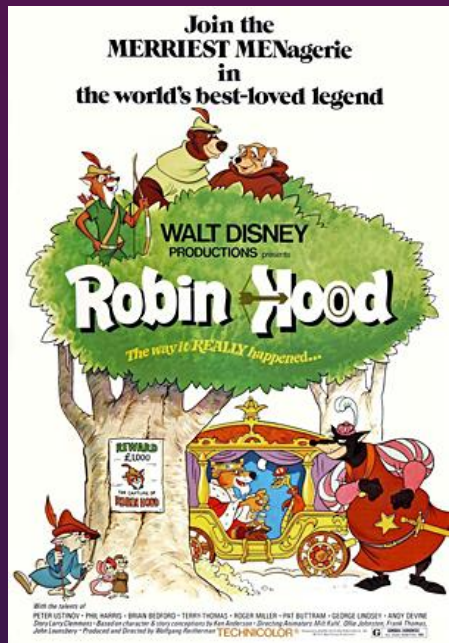


He landed a position in the animation department as an "in-betweenner". This job required him to create the drawings in between the animator's key drawings to complete a movement.



After watching Snow White and the Seven Dwarfs he had found his calling!





In 1971, Bluth returned to Walt Disney Productions as an Animator, beginning what would be considered a skyrocket ride to the top of the animation field. He started as an animator on the feature film Robin Hood (1973). Don was promoted within two years to directing animator on Winnie the Pooh and Tigger Too (1974) and The Rescuers (1977). Don was director of animation on Pete's Dragon (1977) and the following year, Producer/Director on The Small One (1978).

